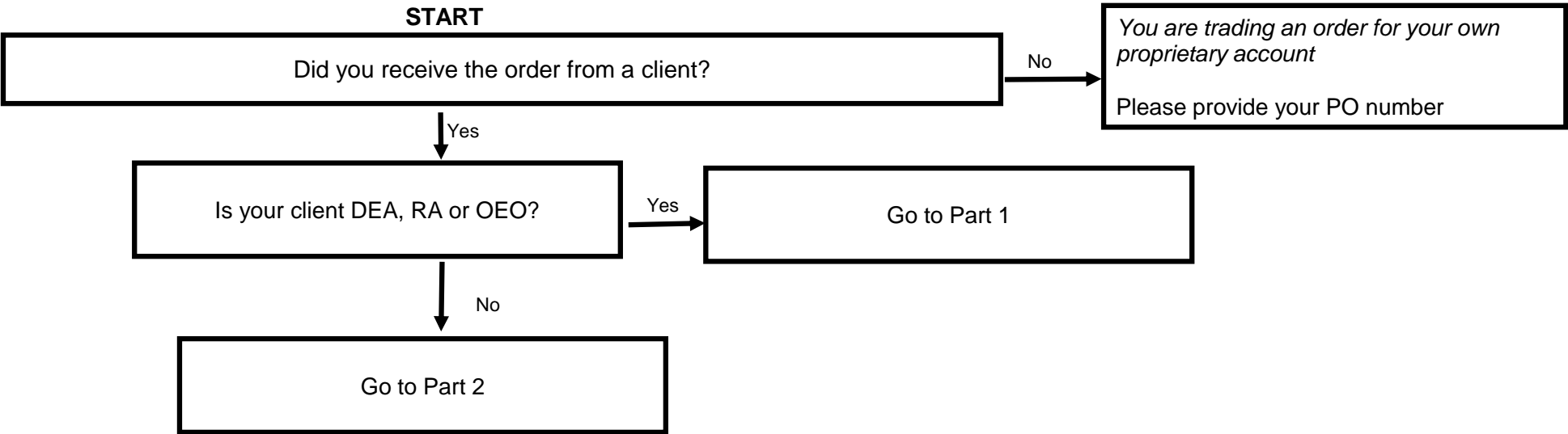
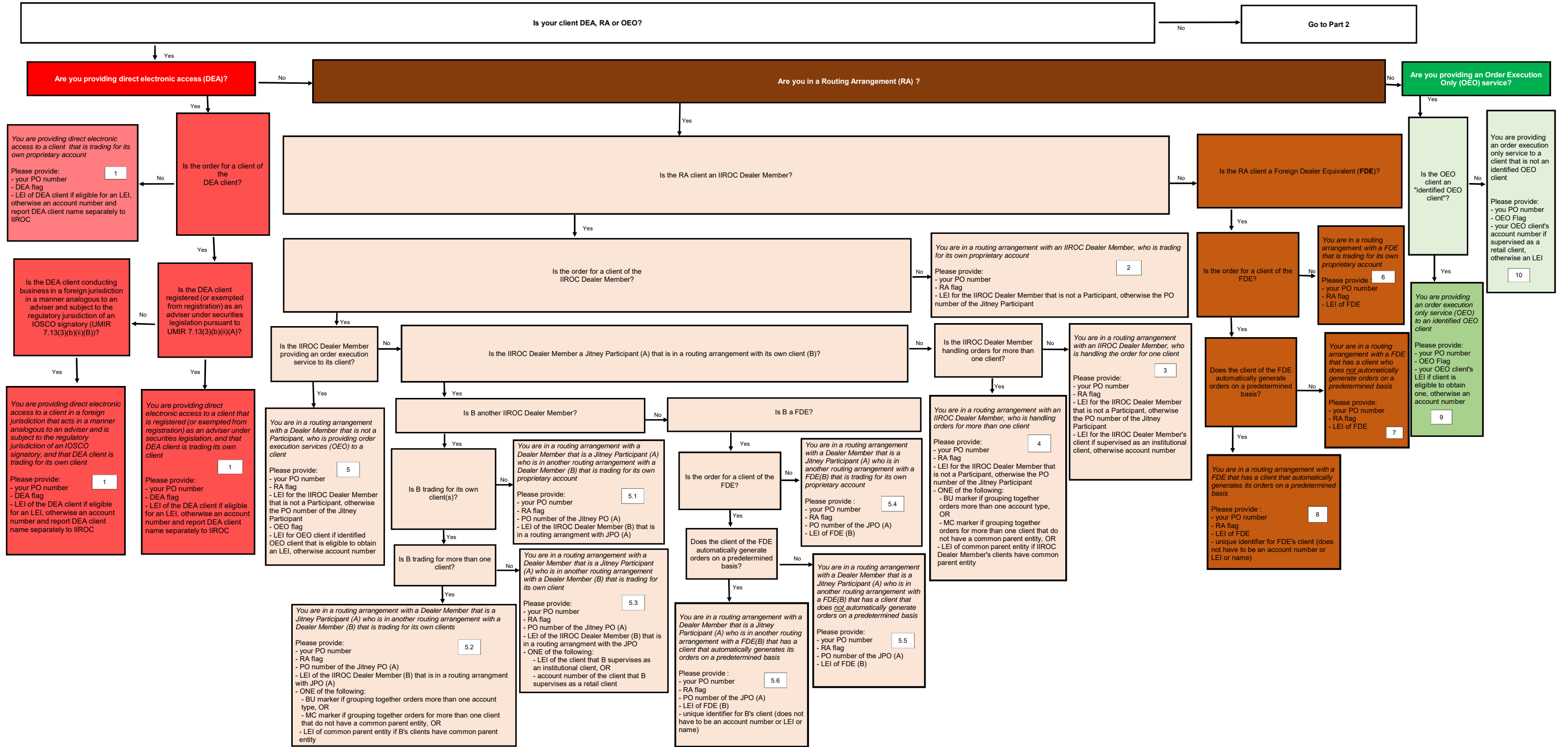


**WHAT GOES ON THE ORDER? Decision Tree for the Executing Participant for Orders in Listed Securities
(as of February 10, 2021)**



WHAT GOES ON THE ORDER? Decision Tree for the Executing Participant for Orders in Listed Securities
Part 1 - Executing Participant receives an order from a client that is DEA, RA or OEO
(as of February 10, 2021)



WHAT GOES ON THE ORDER? Decision Tree for the Executing Participant for Orders in Listed Securities

Part 2 - Executing Participant receives an order from a client that is not DEA, RA or OEO (as of February 10, 2021)

